

Summary of Design Changes

Since the Public Exhibition in November 2018, Dyne House has been subject to reviews by Haringey Council through their Pre-Application process and a Quality Review Panel. The key points raised at these meetings have been summarised below, with further information on the boards showing how the design has evolved to address comments.

Dyne House - What has been said

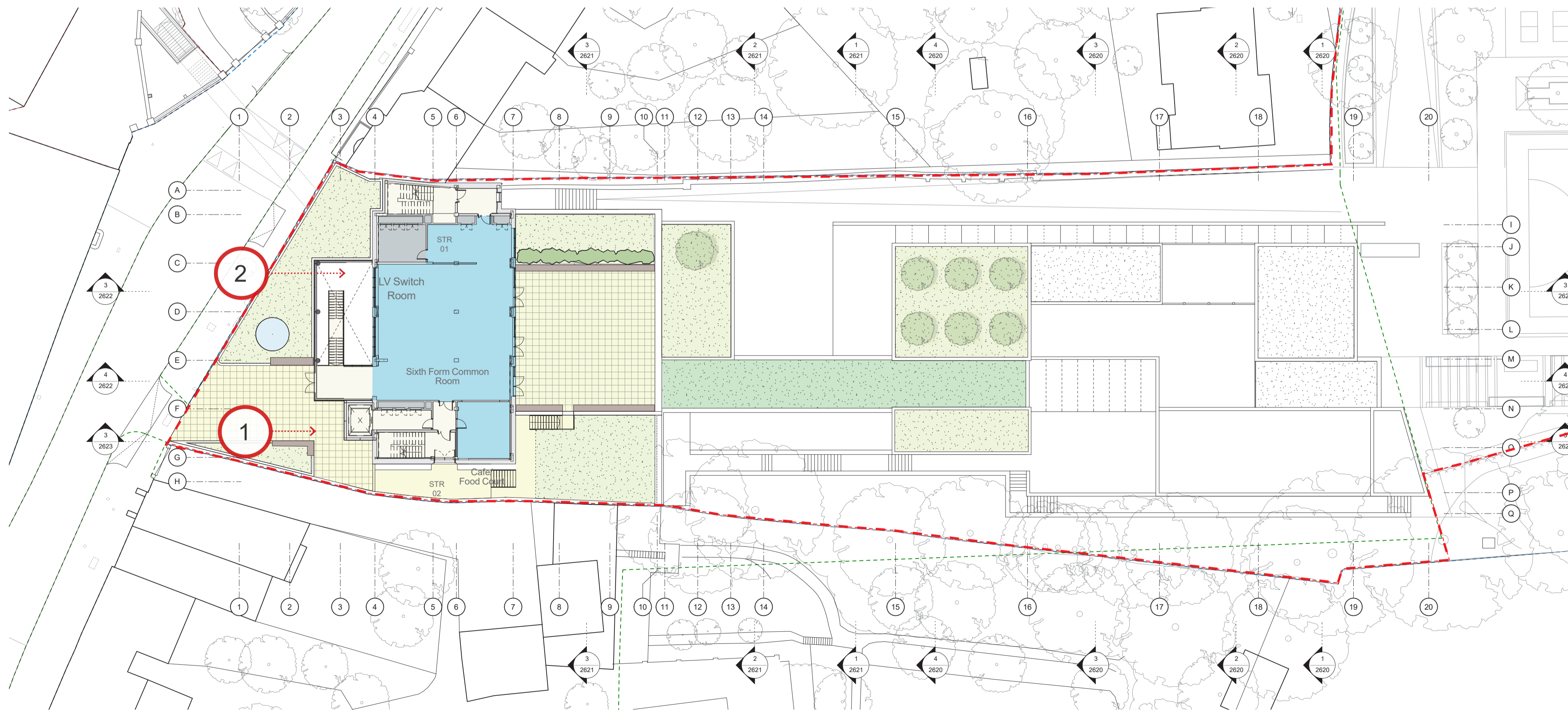
The materiality of brick, stone and glass was commended, but further refinement of the front elevation suggested.

The scale of the articulation of the stone panels on the lift shaft was questioned.

Dyne House - What we have done

A more delicate grain has been provided to the front extension's elevation, with stone fins used to give more depth and a vertical emphasis to the facade, the proportions of which relate to the tracery of the Big School windows opposite.

Slimmer stone cladding panels have been introduced to correspond with the adjacent façade and relate more directly with the stone tracery on the windows of Big School. Recessed edges to the panels give them a subtle emphasis and glazing has been removed from the top floor of the shaft to screen views of the lift car and its mechanisms.



Ground Floor Plan

The main entrance has been relocated to improve connections with the village centre and the other School buildings on the opposite side of Southwood Lane. The move takes the entrance further from the pavement edge where it is able to provide more generous space for those entering the building and offer closer proximity to the lift. The revised proposals also bring more soft landscaping to the front of Dyne House.

Key changes:

1. A new main entrance to the south.
2. A larger planter provides a green buffer between Dyne House and the pavement.

Southwood Lane Facade

On the Southwood Lane Facade greater articulation has been provided to the stone cladding of the lift tower and front-facing extension.

The proportions of the stone brise soleil to the extension reflect the proportions of the stone tracery of the Big School's windows directly opposite. The use of stone also relates to the materiality of other School buildings including the Chapel and those in the Science Building Quadrangle,



Key comments:

1. Previous main entrance located at the north side of the building.
2. Very few areas of soft landscaping on the street.
3. Stone panels previously had little articulation to them and a horizontal emphasis.
4. Large stone panels with a single glazed section gave sight of the lift car and mechanisms.



Key changes:

1. The entrance has moved to the south and more appropriate building signage used.
2. Soft landscaped edge.
3. Stone brise soleil giving a vertical emphasis to the facade.
4. Slimmer stone panels used for the lift tower, with glazing removed on the top floor.



Stonework is used for the School buildings in the Science Block Quad



The Big School directly opposite Dyne House has a vertical emphasis to its fenestration